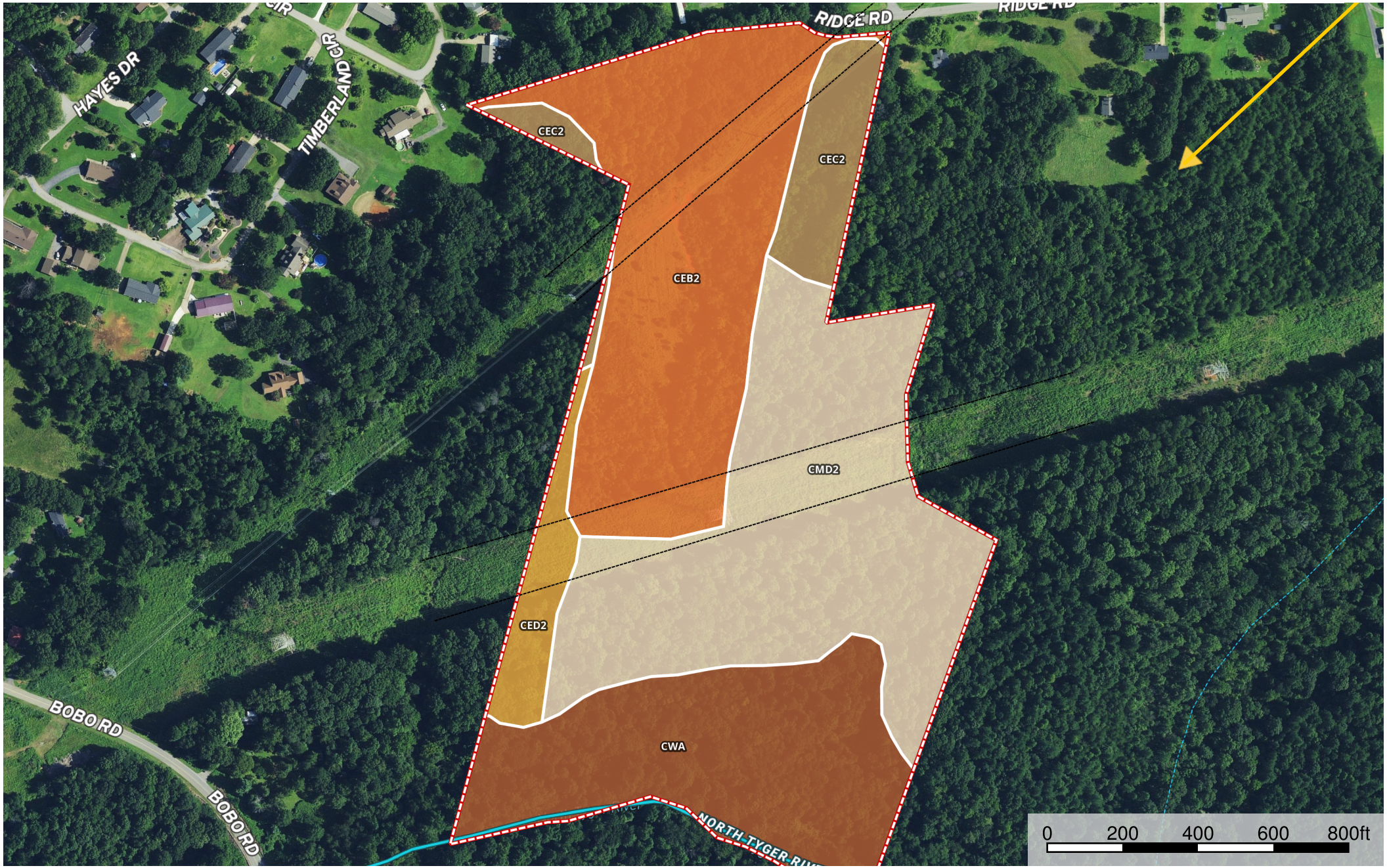


# Rhodes location map

South Carolina, 31 AC +/-



- ★ Star
- Boundary
- ➔ Direction
- ⋯ Transmission Line
- ⋯ Stream, Intermittent
- River/Creek
- Water Body

|  Boundary 31.8 ac

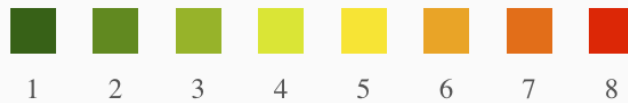
SOIL CODE	SOIL DESCRIPTION	ACRES	%	CAP
CeC2	Cecil sandy clay loam, 6 to 10 percent slopes, moderately eroded	2.2	6.83	4e
CeB2	Cecil sandy clay loam, 2 to 6 percent slopes, moderately eroded	9.7	30.51	3e
CmD2	Cecil-Bethlehem complex, 10 to 15 percent slopes, moderately eroded	11.2	35.21	4e
CeD2	Cecil sandy clay loam, 10 to 15 percent slopes, moderately eroded	1.4	4.26	4e
CwA	Chewacla loam, 0 to 2 percent slopes, frequently flooded	7.4	23.19	4w
TOTALS		31.8	100%	3.69

### Capability Legend

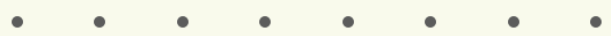
Increased Limitations and Hazards

Decreased Adaptability and Freedom of Choice Users

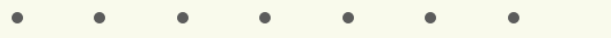
Land, Capability



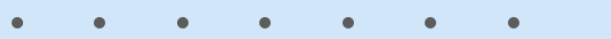
'Wild Life'



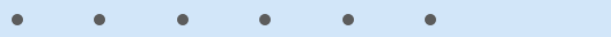
Forestry



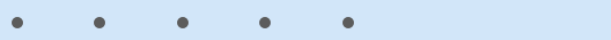
Limited



Moderate



Intense



Limited



Moderate



Intense



Very Intense



### Grazing Cultivation

(c) climatic limitations (e) susceptibility to erosion

(s) soil limitations within the rooting zone (w) excess of water